

HIGHMAT 30

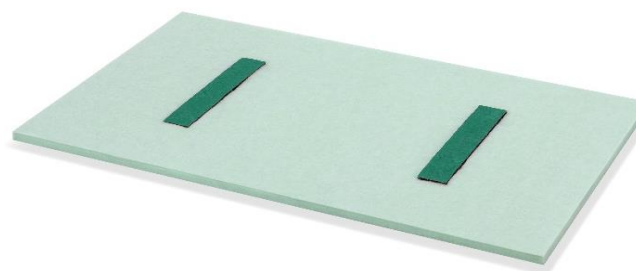
UNDER SCREED ACOUSTIC INSULATION



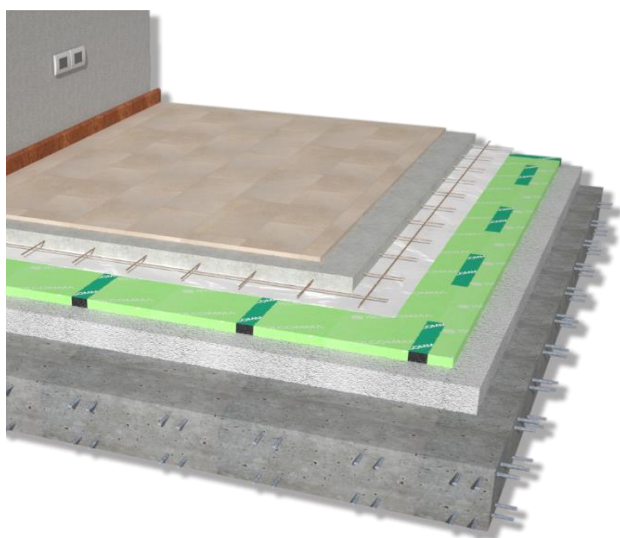
IMPACT NOISE ACOUSTIC INSULATION WITH HIGH THERMAL-ACOUSTIC PERFORMANCES, CONSISTING OF POLYESTER FIBRE PANELS AND PUNCTUAL SUPPORTS IN GRANULAR RUBBER SBR

■ TECHNICAL SPECIFICATION

Under screed acoustic insulation panels made of two rubber bearings inserted in a polyester fiber mat, with a total thickness of 30 mm. The bearings are made of granules and fibres rubber from End-of-Life Tyres (ELTs) compacted using polyurethane glue in a hot process, protected with a non-woven, non-stretch, synthetic membrane on one side; the dimensions of the rubber bearings are 300 mm x 50 mm. The polyester fiber mat has a density of 40 kg/m³ and the total dimensions of the assembled panel are 1000 mm x 600 mm. Impact sound pressure level attenuation 36 dB.



HIGHMAT SIDE



■ CERTIFIED ACOUSTIC IMPROVEMENT

Highmat guarantees the maximum acoustic performances for the reduction of impact noise in the construction of new multi-purpose buildings

■ FLEXIBILITY

The excellent performances even at low frequency make it suitable on lightweight structures or for applications with very low system frequencies

■ LAYING COSTS REDUCTION

The realization in panels allows installation even in the absence of a specific design of the laying layout

■ TO BE USED WITH

Under screed solutions for floors acoustic insulation in multi-purpose buildings

■ TECHNICAL DATA

Thickness	30 mm
Length	1,00 m
Width	0,60 m
Mass per unit area	1,90 kg/m ²

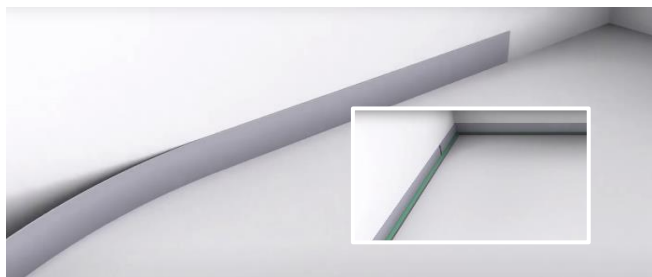
Dynamic stiffness s'	4 MN/m ³
Compressibility c	3,8 mm
Impact sound pressure level attenuation ΔL _w	36 dB
Reaction to fire	E
Thermal conductivity coefficient λ	0,040 W/m K

HIGHMAT 30

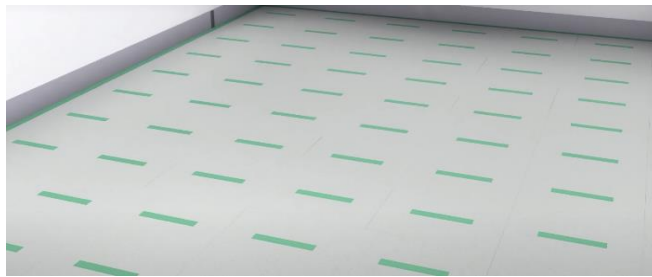
UNDER SCREED ACOUSTIC INSULATION

INSTALLATION INSTRUCTIONS FOR HIGHMAT

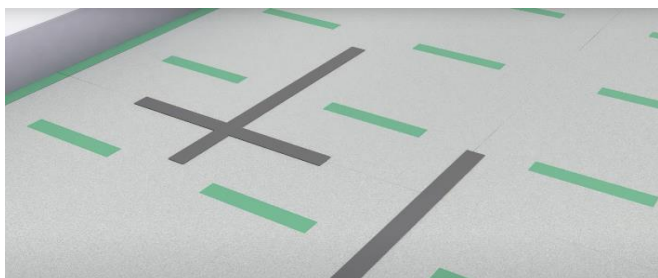
- 1** Install the adhesive strip Profyle Flat to the wall and the Side Highmat along the whole perimeter.



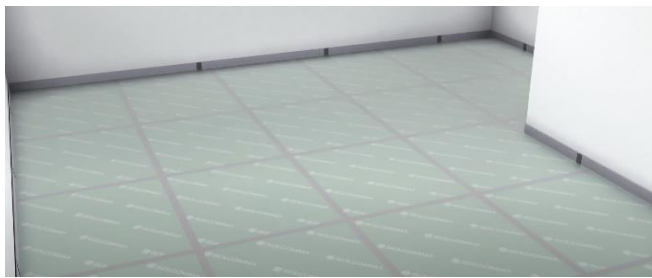
- 2** Install Highmat on the whole surface, staggered between two adjacent rows.



- 3** Seal any gaps higher than 2 mm between panels, using the Stik tape.



- 4** Apply a waterproof foil on the whole surface to protect the resilient layer.



- 5** Install the reinforcement mesh (Ø 5 mm, net 200 mm) and build the screed (th. > 60 mm).

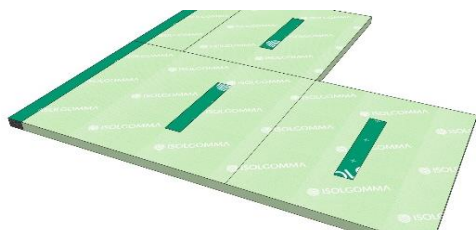


- 6** Apply the finishing on top of the screed and cut the exceeding edging strip only at the end.



NOTES

At the end of the row, proceed with a cut of the Highmat panel when necessary. The waste can be used in the subsequent end-of-line or it can be reduced to half panel to start a new row



During the casting of the screed the Highmat product may undergo a partial deflection in correspondence with the part of the polyester fiber panel

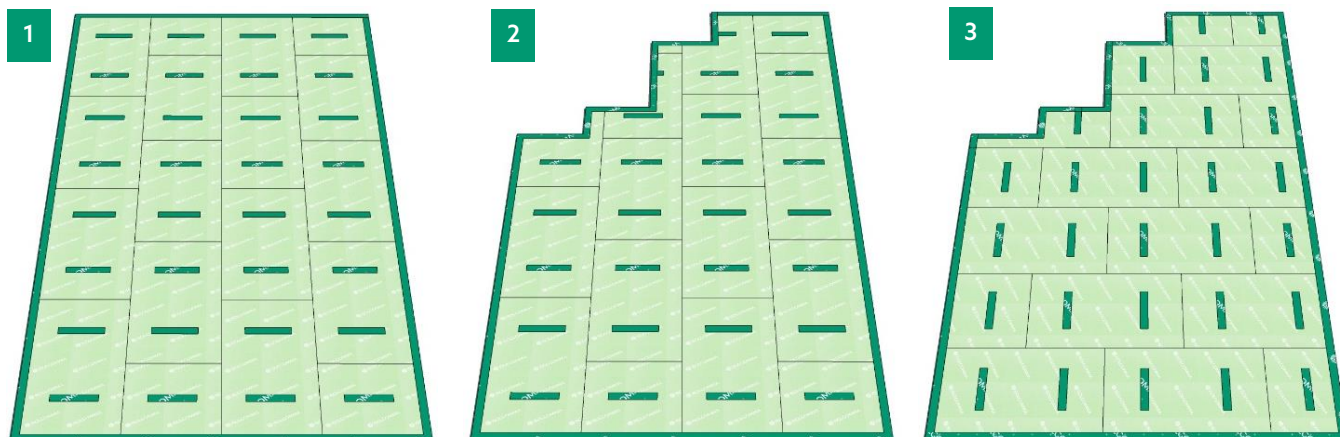


HIGHMAT 30

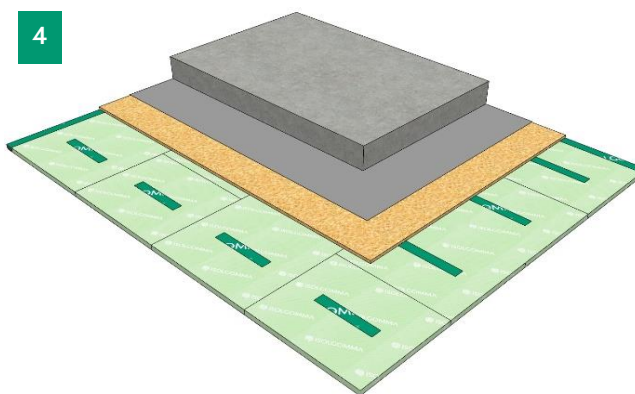
UNDER SCREED ACOUSTIC INSULATION

SPECIFIC LAYING INSTRUCTIONS FOR THE HIGHMAT PANEL AND ACCESSORIES

After preparing the laying surface, the Profyle Flat and the Highmat Side along the perimeter, start laying a full Highmat panel and proceed in the same direction so that the rubber supports are aligned between adjacent rows [1]. The orientation of the rows is at the discretion of the installer [2] [3]



The sand and cement screed or leveling screed must have a thickness of more than 6 cm and a density of at least 2000 kg / m³ and must also be reinforced by a reinforcement mesh of 5 mm diameter and 200 mm mesh positioned at a height of about 20 mm from the top of the resilient mattress. For screed thicknesses greater than 100 mm, use a wooden panel as a disposable formwork (at least 15 mm thick) [4]. Before casting, protect the surface with a waterproof sheet.



ACOUSTIC CERTIFICATES

Product acoustic certificates are available and allow to comply with the limits imposed by law



INSTALLATION TEST

Acoustic performances of the intervention can be tested on site by a competent technician



ACOUSTIC REPORT

Our technical staff is able to give you the proper support in all the project phases, supporting you in the identification of materials



LAYING ASSISTANCE

Thanks to our extensive commercial technicians network, we are at your disposal for the coordination of the first laying phases on site

[SEE THE REFERENCES > VISIT THE WEBSITE](#)

[CONTACT THE TECHNICAL DEPARTMENT FOR MORE INFORMATION](#)