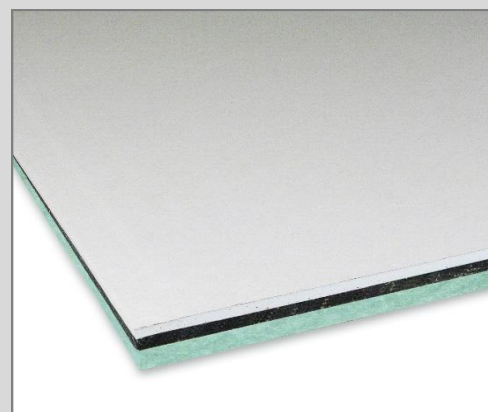


TECHNICAL SPECIFICATION

Airborne noise insulation in 40 mm-thick pre-assembled panels, made of a 8 mm-thick SBR (Stirene Butadiene Rubber) rubber granules hot pressed with polyurethane binder, density of 800 kg/m³, a 20 mm-thick polyester fiber panel, density of 100 kg/m³, and a 12.5 mm-thick plasterboard. The panels dimensions are 1.20 m width x 2.00 m length.



Product Standard
EN 14190:2014

PHYSICAL CHARACTERISTICS	Standard	Unit	REWALL 40	Tolerance
Thickness		mm	40	± 5
Length	EN 822	m	1,20	± 0,005
Width	EN 822	m	2,00	± 0,005
Superficial weight	EN 1602	kg/m ²	18,00	± 10%
Colour			green / black / white	

ACOUSTIC CHARACTERISTICS	Standard	Unit	REWALL 40	Tolerance
<i>Wall composition - 205 mm thickness</i>				
<i>A: coating made with: Rewall 40 + 12.5 mm plasterboard</i>				
<i>B: 120 mm hollow block wall (12/25/50) + 15 mm plaster on both sides</i>				
Transmission Loss Rw	EN ISO 10140 EN ISO 717-1	dB	57⁽¹⁾	
<i>Wall composition - 185 mm thickness</i>				
<i>A: coating made with: Rewall 40 + 12.5 mm plasterboard</i>				
<i>B: 80 mm hollow block wall (8/25/50)</i>				
<i>C: coating made with: Rewall 40 + 12.5 mm plasterboard</i>				
Transmission Loss Rw	EN ISO 10140 EN ISO 717-1	dB	60⁽²⁾	

TECHNICAL CHARACTERISTICS	Standard	Unit	REWALL 40	Tolerance
Thermal resistance R	EN 12667	m ² K/W	0,761	
Fire grade	EN 13501-1		B - s1, d0	

PACKING AND STORING

Each pallet is wrapped and protected with waterproof polythene film. Inside storage is recommended to avoid possible wet storing.

NOTES

⁽¹⁾ Test Report n. RW_2010_019 at Isolgomma Lab, Albettone (Italy)

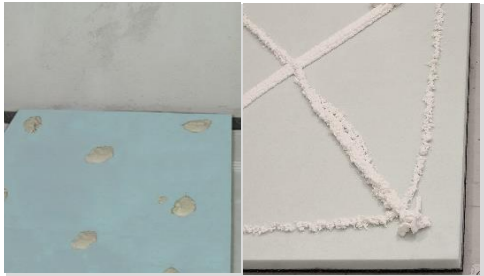
⁽²⁾ Test Report n. RW_2011_007 at Isolgomma Lab, Albettone (Italy)

The suggestions and technical information given above represent our knowledge regarding the properties and the product's uses. ISOLGOMMA reserve the right to modify or update this data without prior notice. This document is the property of ISOLGOMMA and all rights are therefore reserved.

INSTALLATION INSTRUCTIONS - COATED WALL



Lay the under wall stripe



Lay points of a gypsum-based glue on the ground panel or use a low-expansion polyurethane glue



Glue the panel to the wall pressing lightly



If you do not use the glue, fix the panel with the appropriate plugs



Fix the second gypsum board with the glue and/or appropriate screws

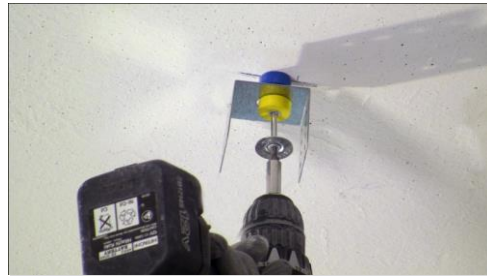


Apply the plastic mesh tape in the gypsum boards jointing lines. Grouting

INSTALLATION INSTRUCTIONS - COATED CEILING



Attach the metal frame along the upper perimeter of the room



Drill the ceiling e fix the acoustic bracket



Fix the metal stud to the acoustic bracket



Lean the panel to the metal frame



Fix the panel to the metal frame with 55 mm screws every 15 cm



Apply the plastic mesh tape in the gypsum boards jointing lines and grouting