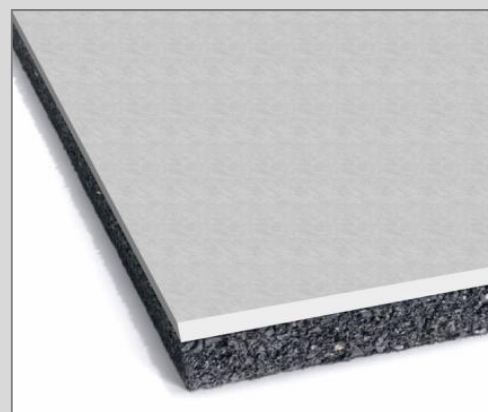


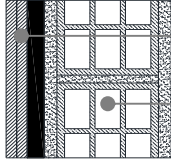
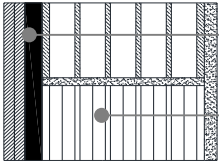
TECHNICAL SPECIFICATION

Pre-assembled 33 mm-thick acoustic insulation panels, made of a ... mm-thick SBR (Stirene Butadiene Rubber) rubber granules layer, assembled with a 12.5 mm-thick plasterboard. The panels dimensions are 1.20 m width x 2.00 m length.



Product Standard
EN 14190:2014

| PHYSICAL CHARACTERISTICS | Standard | Unit | MUSTWALL 33 B | Tolerance |
|--------------------------|----------|-------------------|----------------------|-----------|
| Thickness | | mm | 33 | ± 2 |
| Length | EN 822 | m | 1,20 | ± 0,005 |
| Width | EN 822 | m | 2,00 | ± 0,005 |
| Superficial weight | EN 1602 | kg/m ² | 19,5 | ± 10% |
| Colour | | | black / white | |

| ACOUSTIC CHARACTERISTICS | Standard | Unit | MUSTWALL 33 B | Tolerance |
|---|--------------|------|---|-----------|
| <i>Wall composition</i> A: covering with Mustwall 33 B and an additional gypsumboard 12.5 mm B: hollow brick wall 120 mm (12/25/25), with plaster 15 mm on both sides | EN ISO 10140 | |  | A B |
| Transmission Loss Rw | EN ISO 717-1 | dB | 54⁽¹⁾ | |
| <i>Wall composition</i> A: covering with Mustwall 33 B and an additional gypsumboard 12.5 mm B: perforated brick wall 200 mm (20/25/19); plaster 15 mm | EN ISO 10140 | |  | A B |
| Transmission Loss Rw | EN ISO 717-1 | dB | 60⁽²⁾ | |

| TECHNICAL CHARACTERISTICS | Standard | Unit | MUSTWALL 33 B | Tolerance |
|---------------------------|------------|--------------------|-------------------|-----------|
| Thermal resistance R | EN 12667 | m ² K/W | 0,229 | |
| Fire grade | EN 13501-1 | | B - s1, d0 | |

PACKING AND STORING

Each pallet is wrapped and protected with waterproof polythene film. Inside storage is recommended to avoid possible wet storing.

NOTES

⁽¹⁾ Test Report n. RW_2010_011 at Isolgomma Lab, Albettone (Italy)

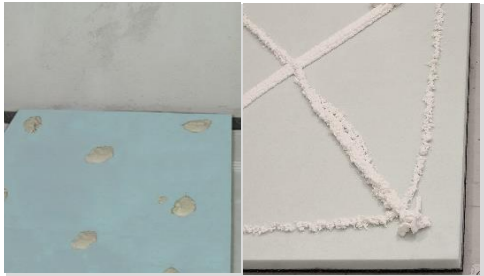
⁽²⁾ Test Report n. RW 2014_006 at Isolgomma Lab, Albettone (Italy)

The suggestions and technical information given above represent our knowledge regarding the properties and the product's uses. ISOLGOMMA reserve the right to modify or update this data without prior notice. This document is the property of ISOLGOMMA and all rights are therefore reserved.

INSTALLATION INSTRUCTIONS - COATED WALL



Lay the under wall stripe



Lay points of a gypsum-based glue on the ground panel or use a low-expansion polyurethane glue



Glue the panel to the wall pressing lightly



If you do not use the glue, fix the panel with the appropriate plugs



Fix the second gypsum board with the glue and/or appropriate screws

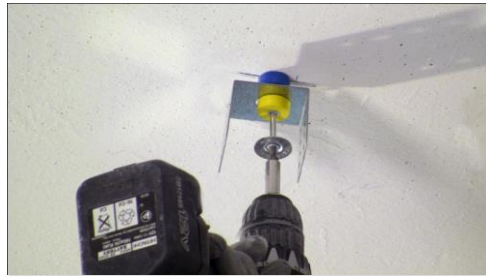


Apply the plastic mesh tape in the gypsum boards jointing lines. Grouting

INSTALLATION INSTRUCTIONS - COATED CEILING



Attach the metal frame along the upper perimeter of the room



Drill the ceiling and fix the acoustic bracket



Fix the metal stud to the acoustic bracket



Lean the panel to the metal frame



Fix the panel to the metal frame with 55 mm screws every 15 cm



Apply the plastic mesh tape in the gypsum boards jointing lines and grouting