

REWALL 33B

ACOUSTIC INSULATION FOR WALLS



HIGH PERFORMANCE AIRBORNE NOISE
THERMAL-ACOUSTIC INSULATION
CONSISTING OF A COUPLED PANEL
COMPOSED OF POLYESTER FIBRE AND
PLASTERBOARD LAYER

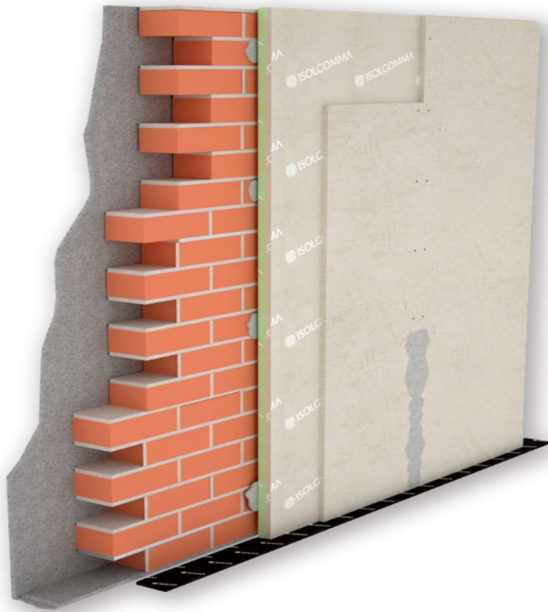


Product Standard
EN 14190:2014



TECHNICAL SPECIFICATION

Airborne noise insulation in 33 mm-thick pre-assembled panels, made of a 20 mm-thick polyester fiber panel, density of 100 kg/m³ and a 12.5 mm-thick plasterboard slab. The panels dimensions are 1.20 m width x 2.00 m length.



CERTIFIED ACOUSTIC IMPROVEMENT

Product for sound insulation of existing walls and floors, Rewall 33B reduces airborne noise between different apartments by improving acoustic comfort

FLEXIBILITY

Rewall 33B can be applied to any wall or ceiling with thermo-acoustic functions. High performances in little space. Does not release dust

LAYING COSTS REDUCTION

Supplied already coupled to a plasterboard layer, Rewall 33B ensures rapid and minimally invasive interventions in terms of dirt and dust production in environments

TO BE USED WITH

Wall solution for renovation and acoustic restoration of existing environments without any demolition work

TECHNICAL DATA

Thickness	33 mm
Length	2,00 m
Width	1,20 m
Mass per unit area	10,5 kg/m ²

Reaction to fire	B-s1,d0
Thermal resistance R	0,688 m ² K/W
Transmission Loss Rw	55 dB

Wall composition - 165 mm thickness
Coating made with Rewall 33B + 12.5 mm plasterboard on 120 mm brick wall



REWALL 33B

ACOUSTIC INSULATION FOR WALLS

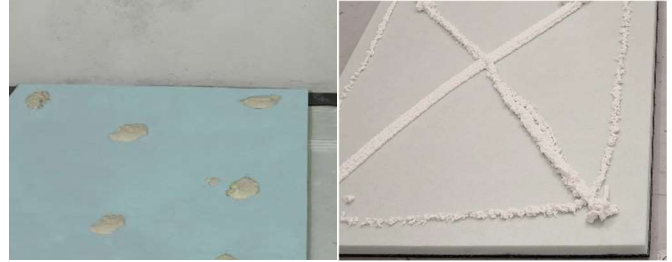


INSTALLATION INSTRUCTIONS FOR ACOUSTIC INSULATION FOR WALLS REWALL 33B

1 Lay the under wall stripe



2 Lay points of a gypsum-based glue on the ground panel or use a low-expansion polyurethane glue



3 Glue the panel to the wall pressing lightly



4 Attach two safety plugs to the top of the panel



5 Fix the second gypsum board with the glue and/or appropriate screws



6 Apply the plastic mesh tape in the gypsum boards jointing lines. Grouting



ACOUSTIC CERTIFICATES
Product acoustic certificates are available and allow to comply with the limits imposed by law



INSTALLATION TEST
Acoustic performances of the intervention can be tested on site by a competent technician



ACOUSTIC REPORT
Our technical staff is able to give you the proper support in all the project phases, supporting you in the identification of materials



LAYING ASSISTANCE
Thanks to our extensive commercial technicians network, we are at your disposal for the coordination of the first laying phases on site

[SEE THE REFERENCES > VISIT THE WEBSITE](#)

[CONTACT THE TECHNICAL DEPARTMENT FOR MORE INFORMATION](#)



www.isolgomma.com
PRG-MOD. 15 - REV.5.0 01/07/21 EN

© Isolgomma Srl. The data and images are indicative and can be changed at any time without notice

